

BF73

BIFOLDING DOORS



- ✓ Market-leading sash size of 1200mm x 3000mm
- ✓ Maximum vision – minimal sight lines, only 120mm
- ✓ Maximum security – PAS 24 approved
- ✓ Maximum insulation value – down to 1.4 U W/m²K
- ✓ Maximum weather proofing – BS6375 Part 1 : 2009
- ✓ Single or dual colour to any RAL colour

alutesystems.co.uk

ALUTECH
SYSTEMS 

BF73 BIFOLDING DOORS

Alutech Systems are one of the largest extruders of Aluminium Systems in the world. We pride ourselves in providing outstanding design and specification to make our products stand out from other manufacturers.

The BF73 Bifolding door can be used for Residential or Commercial purposes.

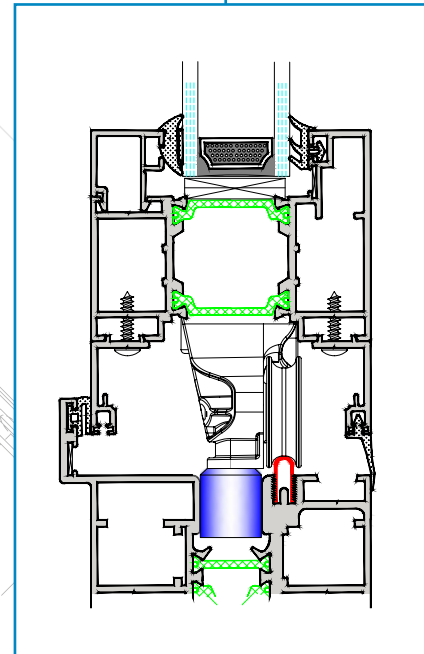
Designed for the aesthetics and insulation requirements of a home, with outstanding durability and reliability of commercial application.

Specification at a glance

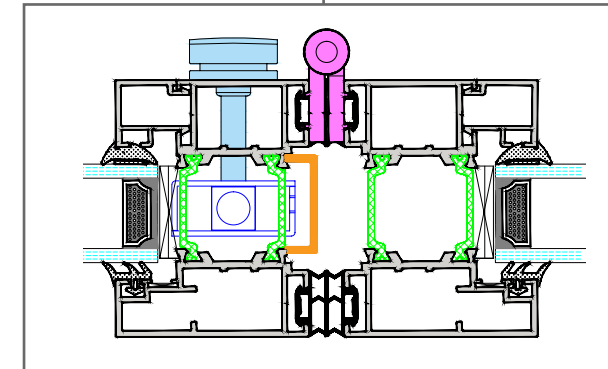
- ✓ Sightline 120mm or 133mm for maximum vision
- ✓ Panels of up to 3000mm high and up to 1200mm wide, without having to upgrade rolling hardware
- ✓ 120kg per door leaf providing for the largest openings
- ✓ Thermal properties of down to 1.4 U W/m2K
- ✓ Engineering grade running rollers for a smooth and silky opening and closing operation
- ✓ Above ground bottom rollers
- ✓ PAS 24 Security-rated
- ✓ Tested to BS6375 Part 1 : 2009

Technical Detail

STANDARD
THRESHOLD



INTERMEDIATE DETAIL
INTEGRATED LOCK



OUTER FRAME DETAIL
WITH ADJUSTABLE JAMBS

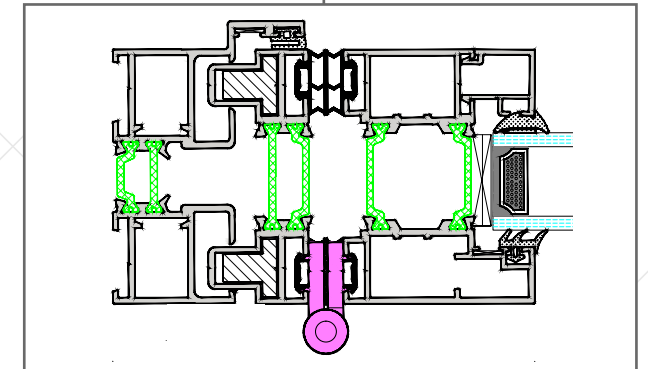


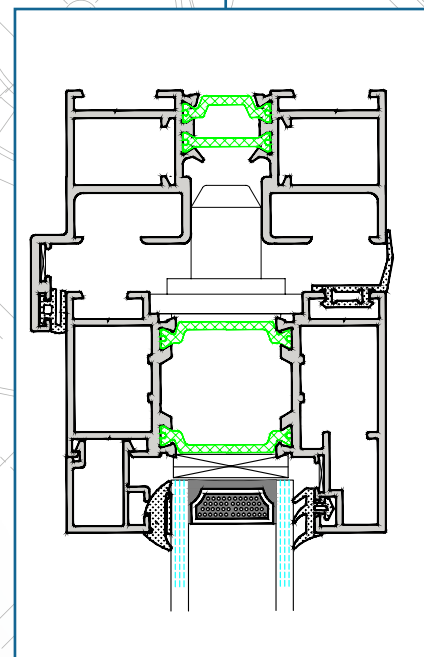
Table of dimensions

Frame width	73mm
Frame depth	81mm inside to outside
Mullion sight line	120mm or 133mm
Glass possibilities	28mm, 32mm, 35mm, 44mm, double & triple glazed units
Max overall height	3000mm
Max overall width	16.8m (1200mm per pane)

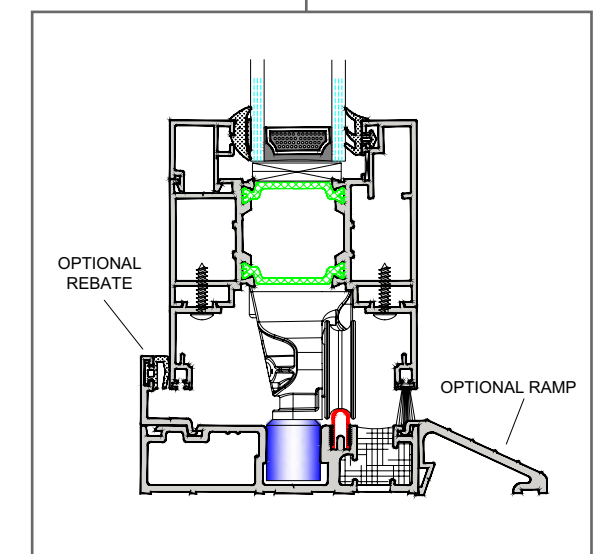
Technical Performance

Thermal properties	Down to 1.4 U W/m2K
Air	Class C4, 600Pa
Wind	Class A3, 1200Pa
Water	Class 9A, 600Pa

HEAD
DETAIL



LOW THRESHOLD
DETAIL



Options

Finish: Single or dual colour. Factory powder coated to marine quality as defined by Qualicote regulations.

Hardware: Handles are available in 5 different types of finish: White, Grey, Black, Chrome and Satin Chrome.

Hinges are finished in black as standard.

Threshold: Low threshold option for disabled access and to eliminate trip hazards.

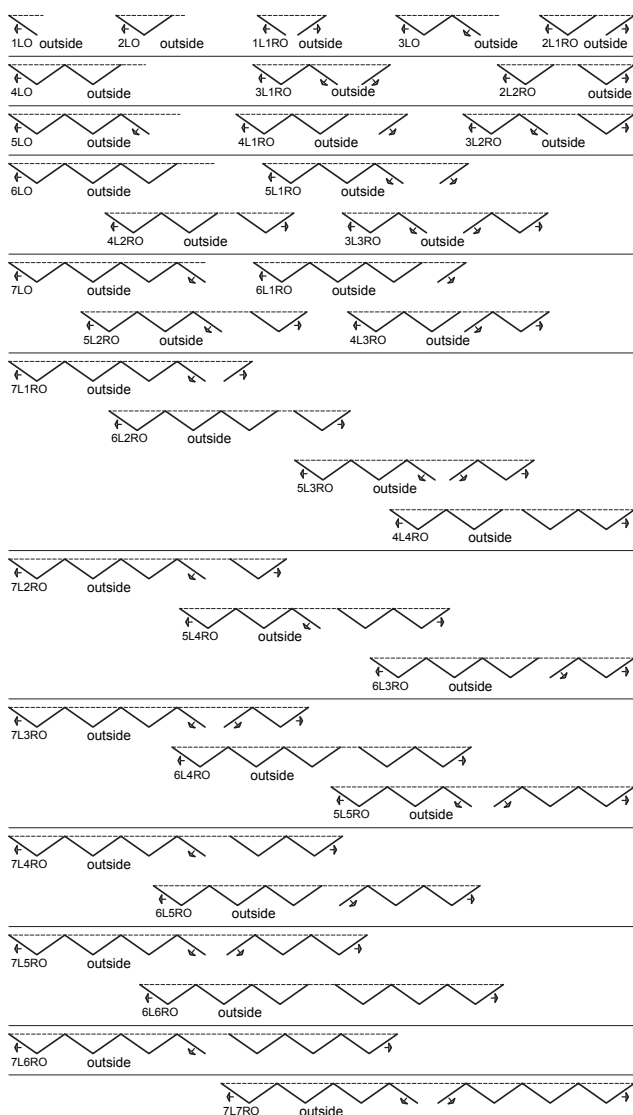
Trickle Vent: 25mm or 40mm infill frame options.

Corner Post available

Door leaf configuration

BF73 is available in up to 7 leaves each way (14 total) to allow for the largest possible openings. To suit the specific application, the door leaves are able to open either from the left or right of the opening, either opening towards the inside of the property or to the outside – the choice is yours.

Open out configurations



TOTAL No OF PANELS

1 + 2 + 3

4

5

6

7

8

9

10

11

12

13

14



Lift & Slide Patio Doors



Aluminium Windows Systems
Commercial & Residential



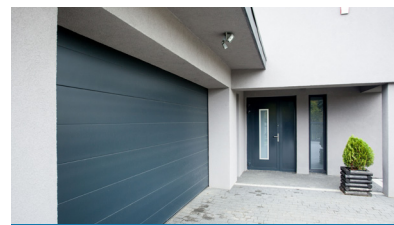
Façade Systems



Shopfront Systems



Roller Garage Doors



Sectional & Industrial Doors

Made by Alutech, specified by you.

Alutech Systems Ltd
Low Mill Lane, Havelock Street, Ravensthorpe Industrial Estate,
Ravensthorpe, Dewsbury, WF13 3LN
T: 01924 350 110
E: sales@alutechsystems.co.uk
W: www.alutechsystems.co.uk

ALUTECH 
SYSTEMS